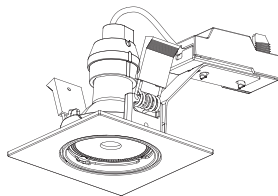
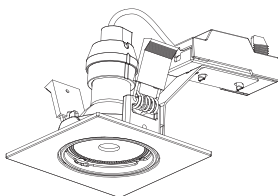
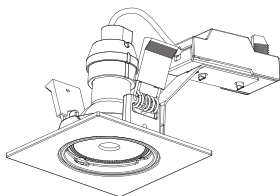


colours



EAN: 3663602804567 / 3663602804574 / 3663602804581
YKRS431SAW / YKRS431SAC / YKRS431SAB

Esope



=



+



EN **IMPORTANT** - Please read carefully the separate safety guide before use.

FR **IMPORTANT** - Lire attentivement le guide de sécurité séparé avant utilisation.

PL **WAŻNE** - Przed użyciem proszę dokładnie zapoznać się z instrukcją bezpieczeństwa.

DE **WICHTIG** - Lesen Sie vor Gebrauch die separaten Sicherheitshinweise.

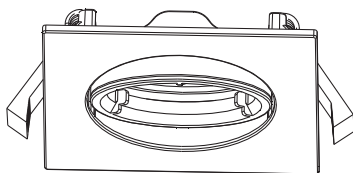
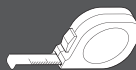
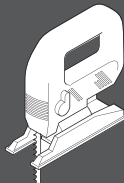
RU **ВАЖНО** - Пожалуйста, внимательно прочитайте отдельное руководство по технике безопасности перед использованием.

RO **IMPORTANT** - Vă rugăm să citiți cu atenție ghidul de siguranță separat înainte de utilizare.

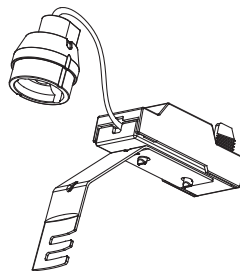
ES **IMPORTANTE** - Lea atentamente la guía de seguridad separado antes de utilizar.

PT **IMPORTANTE** - Leia atentamente o guia de segurança separado antes de usar.

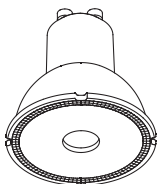
TR **ÖNEMLİ** - Kullanmadan önce emniyet kurallarını lütfen dikkatle okuyun.



[01] x 3



[02] x 3



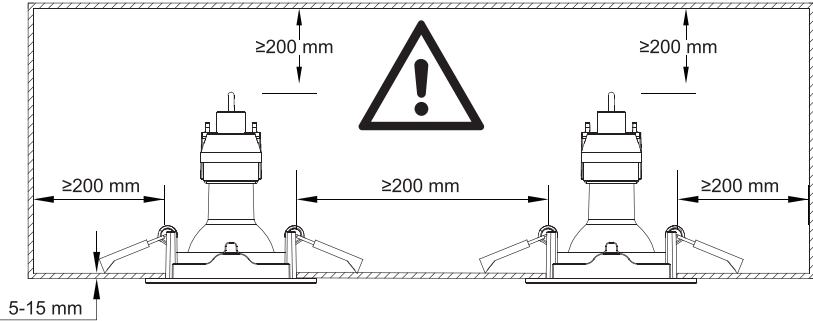
[03] x 3



EN Installation
DE Installation
ES Instalación

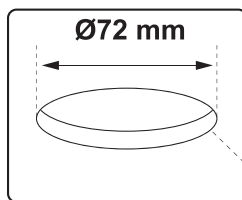
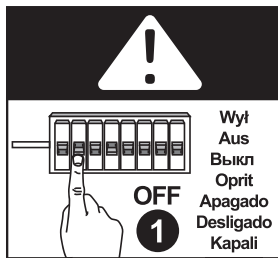
FR Installation
RU Установка
PT Instalação

PL Instalacja
RO Instalare
TR Montaj

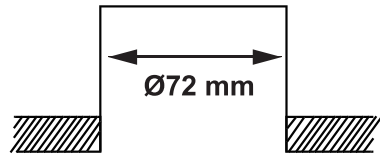


- EN It is always recommended to cut the hole slightly smaller than the size specified, and then file the hole until the recessed unit fits snugly.
- FR Il est toujours recommandé de percer un trou un peu plus petit que la taille indiquée puis de limer le trou jusqu'à l'encastrement du produit.
- PL Zalecane jest zawsze wykonanie otworu nieco mniejszego niż rozmiar podany dla produktu, a następnie wypolerowanie otworu po wpuszczeniu produktu.
- DE Es empfiehlt sich, das Loch mit einem etwas geringeren Durchmesser als angegeben zu bohren und gegebenenfalls nachzubohren, bis das eingelassene Bauteil sauber umfasst ist.
- RU Рекомендуется вырезать отверстие немного меньшего диаметра, чем указано, а затем обработать края напильником до плотной посадки встраиваемого блока в отверстие.
- RO Este recomandabil să se realizeze o gaură puțin mai mică decât dimensiunea specificată, iar apoi ajustați gaura până când unitatea încadrată se potrivește perfect.
- ES Siempre es recomendable perforar el agujero más pequeño del tamaño especificado, después lime el agujero hasta que la unidad encaje perfectamente.
- PT Recomenda-se sempre perfurar o buraco menor que o tamanho especificado e depois lixá-lo para que a unidade encaixe perfeitamente.
- TR Armatürün yerleştirileceği deliğin belirlenen ölçüden küçük kesilmesi önerilir. Ürünü sıkı bir biçimde yerleştirmek için ayarlama yaparken delik dikkatli bir biçimde genişletilmelidir.

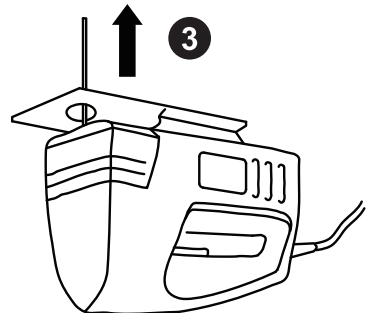
01



2



3

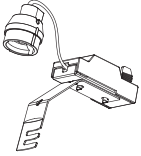


EN Installation
DE Installation
ES Instalación

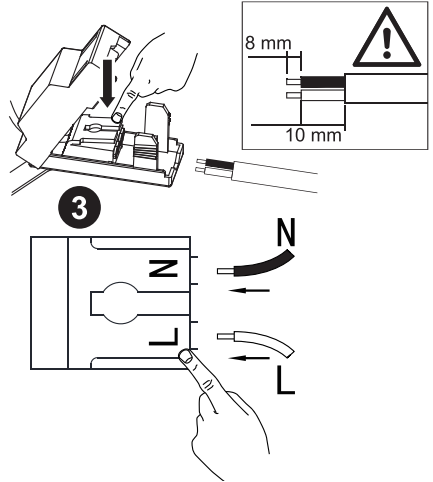
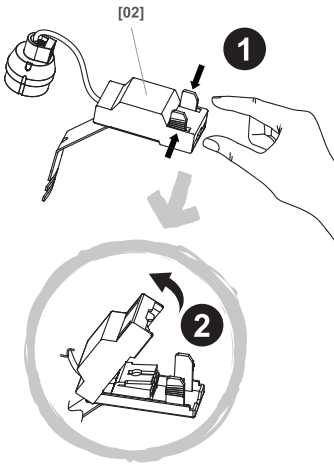
FR Installation
RUS Установка
PT Instalação

PL Instalacja
RO Instalare
TR Montaj

02



[02] x 1



EN L = Brown or Red
N = Blue or Black

FR L = Marron ou Rouge
N = Bleu

PL L = Brązowy lub Czerwony
N = Niebieski

DE L = Braun oder Rot
N = Blau

RUS L = Коричневый или красный
N = Синий

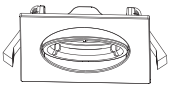
RO L = Maro sau rosu
N = Albastru

ES L = Marrón o Rojo o Negro
N = Azul

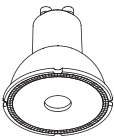
PT L = Castanho ou Vermelho
N = Azul

TR L = Kahverengi
N = Mavi

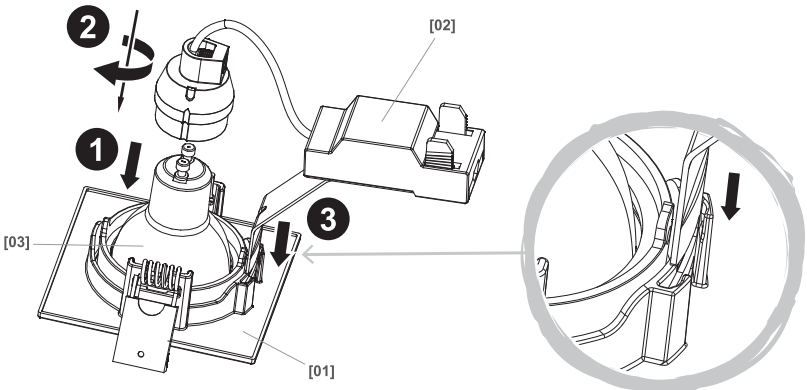
03



[01] x 1



[03] x 1

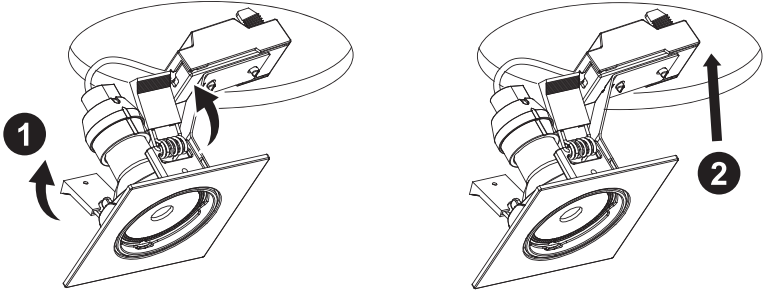


EN Installation
 DE Installation
 ES Instalación

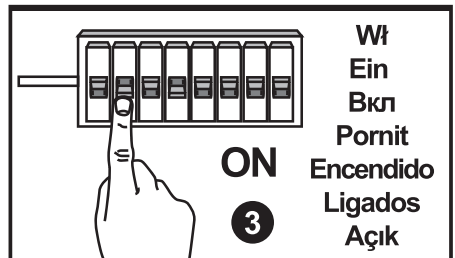
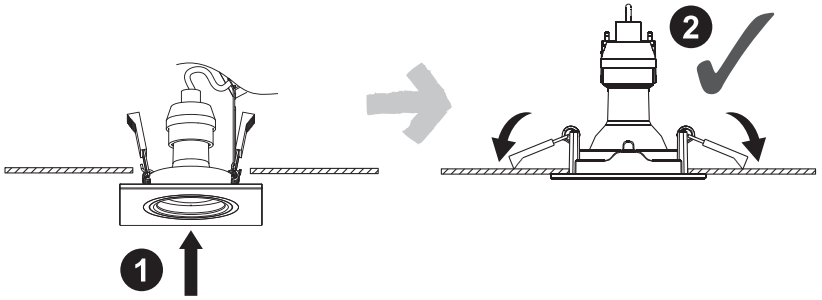
FR Installation
 RU Установка
 PT Instalação

PL Instalacja
 RO Instalare
 TR Montaj

04



05



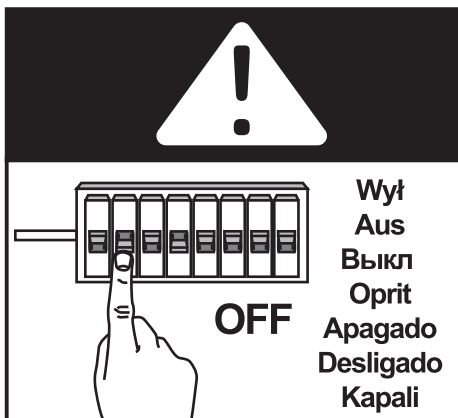


EN Care
DE Pflege
ES Advertancia

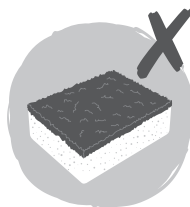
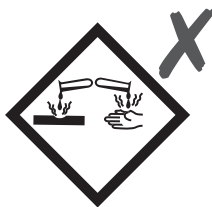
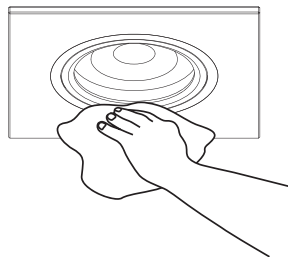
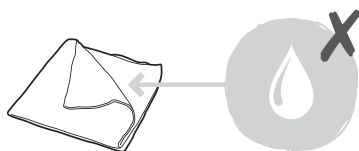
FR Entretien
RUS Уход
PT Aviso

PL Pielęgnacja
RO Îngrijire
TR Bakım

01



02





EN Maintenance

FR Maintenance

PL Konserwacja

DE Wartung

RUS Обслуживание

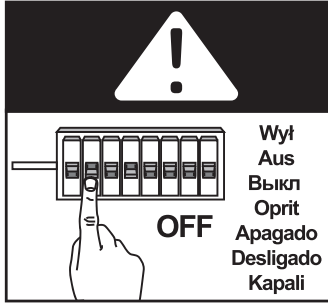
RO Întreținere

ES Mantenimiento

PT Manutenção

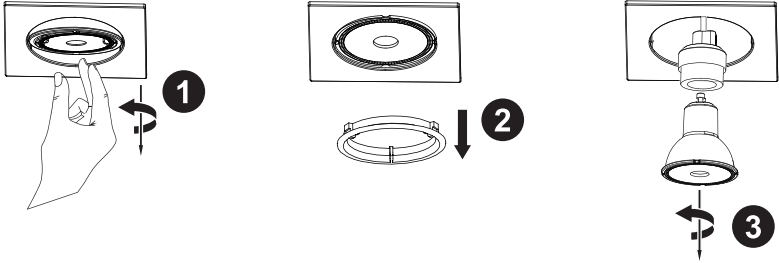
TR Bakım

01



- EN Bulb replacement
- FR Remplacement de l'ampoule
- PL Wymiana żarówki
- DE Leuchtmittelwechsel
- RUS Замена лампочки
- RO Înlocuirea becurilor
- ES Reemplazo de bombillas
- PT Substituição de lâmpada
- TR Ampul değiştirme

02



03

