

SEPARATIONS	JOB INFO	
	PID #:	Brand:
	Agency Job #: PRJ04737	Brand Contact: soraya.berrag@kingfisher.com
	Product Description: Dallas Table	Barcode: 3663602936121
		Vendor: Yotrio Group Co., Ltd.
		No. of New Line Drawings: 0
		Page Size: A4 / No. of Pages: 2
VERSION #		
1	2	3
20/09/16 Canmy	26/09/16 Canmy	14/10/16 Mandy
		4
		XX/XX/16 NAME
		5
		XX/XX/16 NAME
<p>This file is the property of Kingfisher Group Plc. No copying, alteration or amendment is permitted without written authorisation from the Kingfisher Brand Team.</p> <p>翠丰集团不会以专色(PMS)作参考，请参照已提供的印刷标准及Lab色彩数值生产以符合印刷品之标准。本文件的版权归翠丰集团所有。未经翠丰品牌团队的书面同意，不得对本文件进行复制、变更或修改。</p>		

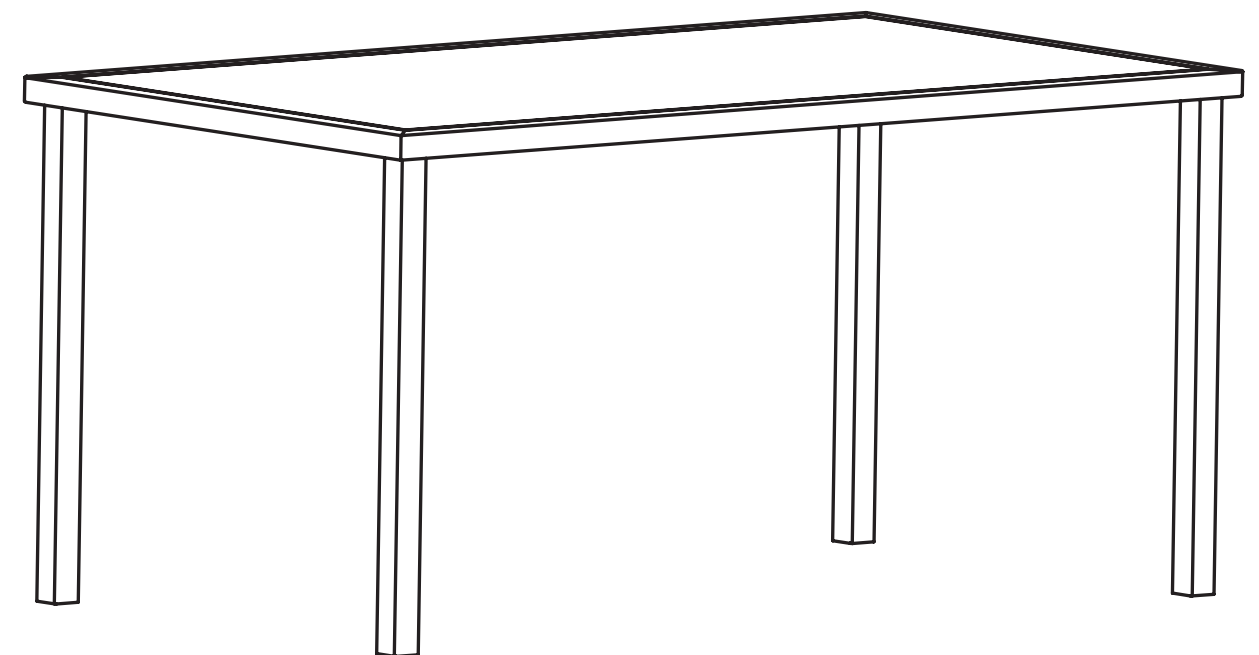
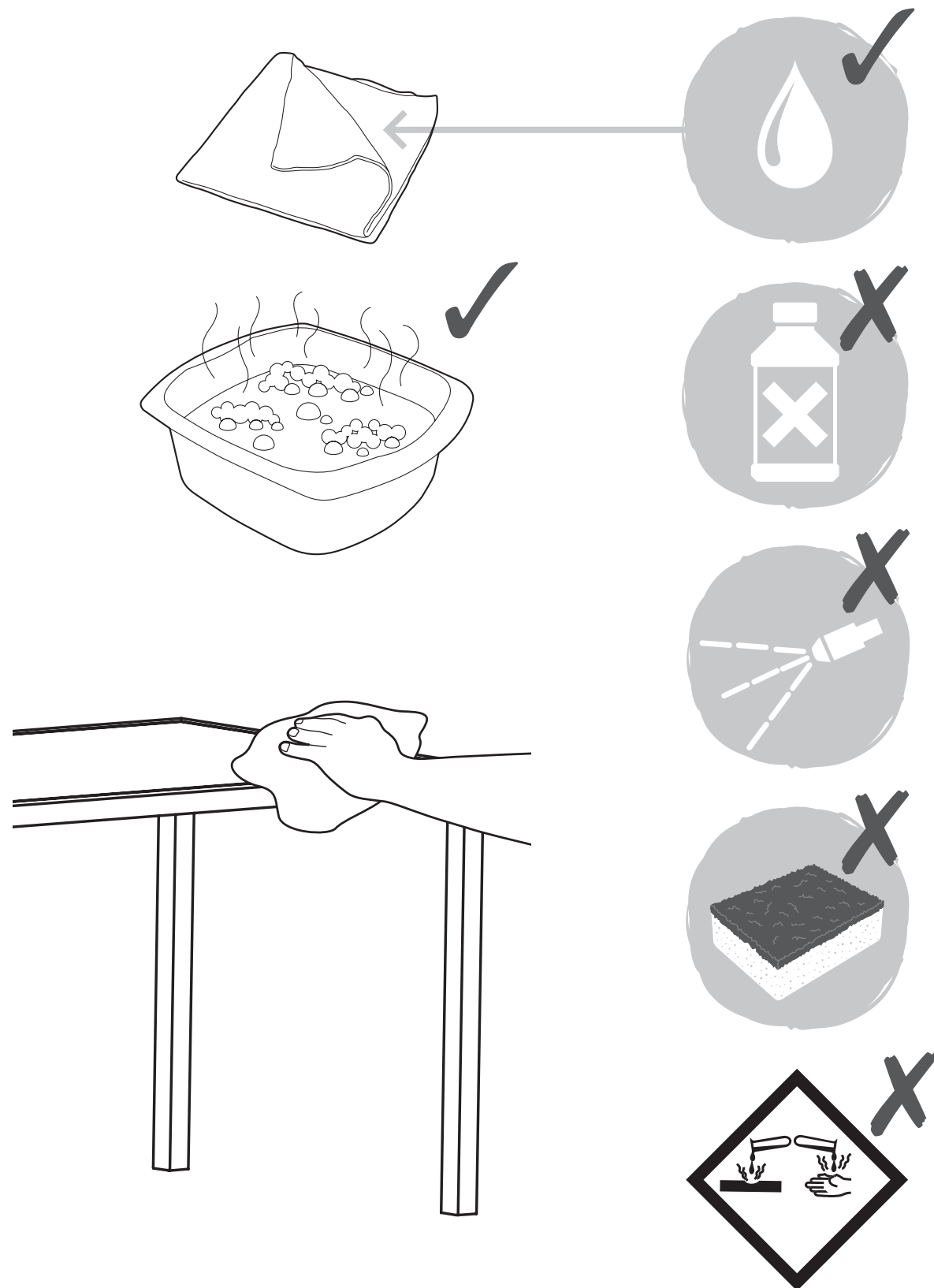


EN Care
RUS Уход
PT Aviso

FR Entretien
RO Îngrijire
TR Bakım

PL Pielegnacja
ES Advertancia

01



3663602936121

Dallas



EN IMPORTANT - Please read carefully the separate safety guide before use.

FR IMPORTANT - Lire attentivement le guide de sécurité séparé avant utilisation.

PL WAŻNE - Przed użyciem proszę dokładnie zapoznać się z instrukcją bezpieczeństwa.

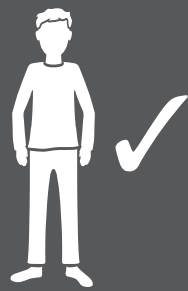
RUS ВАЖНО - Пожалуйста, внимательно прочитайте отдельное руководство по технике безопасности перед использованием.

RO IMPORTANT - Vă rugăm să citiți cu atenție ghidul de siguranță separat înainte de utilizare.

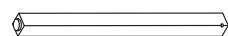
ES IMPORTANTE - Lea atentamente la guía de seguridad separado antes de utilizar.

PT IMPORTANTE - Leia atentamente o guia de segurança separado antes de usar.

TR ÖNEMLI - Kullanmadan önce emniyet kurallarını lütfen dikkatle okuyun.



[01] x 1



[02] x 4



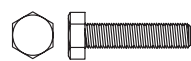
[03] x 1



[04] x 8



[05] x 8



[06] x 8



[07] x 8



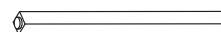
[08] x 1



01



[01] x 1



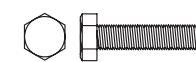
[02] x 4



[04] x 8



[05] x 8



[06] x 8



[07] x 8



[08] x 1

02



[03] x 1

EN Assembly
RUS Сборка
PT Montagem

FR Assemblage
RO Asamblare
TR Montaj

PL Montaż
ES Montaje

